



Welcome!

Message from Maria

IWAG PRESIDENT, JANUARY 2024 - PRESENT

Dear Member,

We are delighted to welcome you to the IWAG family and hope you will enjoy a membership year filled with entertaining programmes and activities.

IWAG hopes to enable you to meet people and make new friends so that you can pursue your interests while feeling comfortable and inspired with each activity you participate in.

We hope that IWAG becomes a place for making contacts with Georgians and expatriates while experiencing the culture of this beautiful country and the influences from all over the world.

Moreover, our Charity Projects Committee (CPC) supports Georgian people and local organisations in need. Our largest fundraising and charity activity is our annual Winter Fair. Your Involvement will be greatly appreciated.

Each new member brings fresh energy and creative ideas. We look forward to getting to know you and seeing you at one of our activities.

Wishing you a year full of wonderful moments with IWAG.

INTERNATIONAL
WOMEN'S ASSOCIATION



GEORGIA

WWW.IWA.GE

Maria Fischer

IWAG has two main pillars



Social activities

The membership fee paid by members is exclusively spent on events for our members.

[LINK TO SOCIAL ACTIVITIES](#)

[LINK TO HOSPITALITY](#)



Charity activities

Our charity activities are solely covered from fundraising events and initiatives run throughout the year.

[LINK TO CHARITY PROJECTS](#)

The Board and Chairs

Our Board and Chairs consists of:

- President
- Fundraising Chair
- Charity Projects Committee Chair
- Interest Groups Chair
- Membership Chair
- Hospitality Chair
- Newsletter Chair
- Culture Chair
- Public Relations Chair
- Secretaries

[HTTP://IWA.GE/ABOUT-US/BOARD/](http://IWA.GE/ABOUT-US/BOARD/)

Board and Chair members are here to help you on your IWAG journey, so always feel free to turn to them with any questions.

You can find their contact details at the end of this booklet.

Coffee Mornings

Coffee mornings are generally held every Wednesday from 11am. They are informal gatherings, usually hosted by a member or by a company. When no formal host is announced, members are still invited to meet at a nominated venue. Usually, no contribution is needed, each person simply pays for the items that they order. Anyone can host a coffee morning; they should generally expect around 15 - 30 members attending. Usually, some light snacks, biscuits, coffee and tea are served. It's just about friends, members, getting together, talking, getting to know each other and forming friendships.



General Business Meetings (GBMs)

GBMs happen monthly, usually on the first Wednesday of the month, from around 11am. This year, we will mostly be hosted by Sheraton, but details of these meetings are always sent out in advance, along with the agenda for the meeting. These meetings have an official part where the board reports to the members about the recent news in their areas, and sometimes voting also happens on certain issues. There are usually also guest speakers or artists to introduce their work. The rest of the event is about socializing with other members while enjoying some light refreshments.

In addition to members, anyone who is interested in joining IWAG can come along and participate as a guest, but we encourage all members and guests to register for these events with the Hospitality Chair, as this helps us when ordering the catering for these sessions.

We usually ask a small contribution for attending the GBM which goes towards costs. The remaining costs of hosting the GBMs (venue and equipment hire, coffee and other refreshments...) is paid for from the membership dues.



Winter Fair

The IWAG Winter Fair is our largest fundraising event, with all proceeds going directly to our charity projects. This year it will be on Saturday, the 7th of December, at Sheraton Grand Tbilisi Metechi Palace Hotel. There are two ways it raises funds. Firstly, Embassies are provided free tables that they fill with their national foods and products. They then donate their income to IWAG. Secondly, vendors, who are local artists and craftspeople, are provided tables for a small fee, which also goes directly to our charity funds. Our winter fairs are usually fun, colorful, happy markets with thousands of visitors, with a large part of the diplomatic corps present.



Summer Lunch

The summer lunch is the formal closing event of the year. Tickets are sold only to members and their small circle of guests. Ticket sales contribute towards covering the costs, with the remainder being covered from the membership dues. Members come together and celebrate a successful working year, full of interesting encounters and friendship.





Interest groups ●

Interest groups are classes/meetings where members can participate in specific activities that they enjoy and can learn about topics that interest them. The creation of these groups relies on the talent, skills or just curiosity of our members. Every interest group has an interest group leader who organizes the meetings/classes and keeps in touch with those members that signed up for that interest group. The Interest Group Chair is a board member who oversees and supports the overall functioning of all interest groups. In general, participation in interest groups is free, although in some cases there may be a charge to cover specific costs, for example, if a particular specialist is engaged to lead a session, if there are charges for refreshments that are ordered and paid for individually, or if there are transport or location costs to be shared between participants.

Details regarding any costs can be checked with the relevant interest group leader. If you are interested in joining any of the interest groups that are offered, please contact the interest group leader, or the Interest Group Chair at interestgroups@iwa.ge.

If you have a skill, or a knowledge that you would like to share with other members, you can initiate an interest group by contacting the interest group chair who will share information about the proposed group among our members, and if there is enough interest/members registering, then the group will start functioning.

[HTTP://IWA.GE/ACTIVITIES/INTEREST-GROUPS/GROUPS/](http://iwa.ge/activities/interest-groups/groups/)



Charity Projects Committee (CPC)

IWAG tries to improve the lives of women, children and elderly people, as well as persons who are vulnerable, disabled, sick, and needy.

This also includes the support of prevention programs. All supported projects must have a direct, positive effect on Georgian citizens.

During the past two decades, IWAG has helped many individuals and organizations with hundreds of thousands worth of grants.

The money, collected by the fundraising activities of IWAG, is spent with fiduciary responsibility. We support a wide range of projects, from large scale efforts such as establishing a shelter with the Anti-Violence Network, to providing direct support to small organizations and individuals.

The CPC work involves monitoring and reporting on the supported projects, also with visits to these organizations in the regions, and monthly meetings where CPC members give a follow-up of the projects they monitor and vote on applications for grants. For bigger projects, IWAG members are informed in detail and asked to give their consent through a majority vote, usually in a GBM or by email.

Turn to the

Charity Projects Committee (CPC) Chair

cpc@iwa.ge

if you

- have any questions about our charity work
- would like to learn more about the individuals and organizations we support
- know of an individual or an organization that needs help in the form of a small grant
- would like to participate in the charity work of the organization by becoming a CPC member.



[HTTP://IWA.GE/COMMUNITY-PROJECTS/CPC-PROJECTS/](http://iwa.ge/community-projects/cpc-projects/)



Turn to the

Interest Groups Leader

interestgroups@iwa.ge

if you

- would like to get up-to-date information on the interest groups that are available
- would like to join any of the interest groups that are available
- would like to initiate an interest group.

[HTTP://IWA.GE/ACTIVITIES/INTEREST-GROUPS/GROUPS/](http://iwa.ge/activities/interest-groups/groups/)

IWA'S BANK DETAILS AS A CONVENIENT QR CODE



Contact the

Fundraising Chair

fundraising@iwa.ge ●

if you

- would like to help with organizing the Winter Fair
- know of vendors, artists that might be interested in joining the Winter Fair
- know of companies that would like to become sponsors (IWAG has various sponsorship packages available to them)
- have any other fundraising ideas that you would like to discuss.



[HTTP://IWA.GE/ABOUT-US/FUNDRAISING/](http://iwa.ge/about-us/fundraising/)



Turn to the

Membership Chair

membership@iwa.ge ●

if you

- have any questions about the application process, fees, full and associate membership types
- would like to invite new members or have any ideas about how to engage more people to become members.

[HTTP://IWA.GE/MEMBERSHIP/](http://iwa.ge/membership/)

Contact the

Newsletter Chair

newsletter@iwa.ge ●

if

- you have any content you think should be included in the newsletter (no advertisements, please)
- there is an advertisement (paid) you would like to place in the newsletter, or you know others (non-members) who would like to advertise their services through the newsletter.



[HTTP://IWA.GE/NEWSLETTER/](http://iwa.ge/newsletter/)



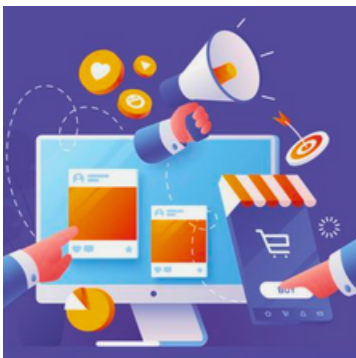
Contact the
Hospitality Chair

iwageorgia@gmail.com

if you

- would like to get more information about upcoming events, coffee mornings
- would like to host a coffee morning or know of a business/venue that would like to host a coffee morning
- have some other ideas to get together (dinner, lunch, other event ideas) where you would like other members to join you or that you would like to organize.

[HTTP://IWA.GE/ACTIVITIES/HOSPITALITY/](http://IWA.GE/ACTIVITIES/HOSPITALITY/)



Contact the
Public Relations Chair

iwageorgia@gmail.com

if you

- would like to announce information on the website or Facebook Page that concerns the general public.
- are aware of organizations willing to cooperate with IWAG.
- have ideas to attract expats to join IWAG or raise awareness about our work.
- want to promote the IWAG image in your community.

[HTTPS://WWW.FACEBOOK.COM/IWA.GEO](https://www.facebook.com/IWA.GEO)

Contact the
Secretaries

iwageorgia@gmail.com

if you

- have important information that should be shared with all members
- have difficulties with receiving emails
- have any general question that you are unsure who to address to.

